

Get your business connected with QSS  
featuring Microsoft® .NET framework-based applications.

# Wireless Bar Code Receiving

## Add efficiency to your business with PDA interfaces and bar code applications

Now you can input and retrieve valuable information from your Epicor™ system whenever and wherever you are with our customized mobile computing solutions.

Our bar code and PDA applications are Microsoft-based, and run on Pocket PC devices. You don't have to have an existing Web site linked to your Epicor system. Our applications are stand-alone, so there is no additional software required for you to use our applications. All updates to your database use your existing ManFact™, DataFlo™ or Avanté™ business rules, so you can be assured of the integrity for every transaction.

## Take a closer look at Wireless Bar Code Receipts

Use this application for receiving product using wireless bar code scanning devices. Bar code scanning of receipts is critical for improving your overall inventory accuracy.

This screen guides you through a streamlined receiving process.

First enter or scan the packing slip

to receive against. Then, scan or enter the part number to receive. Note that the **Part#** button can be used to conveniently and quickly find the part number or to trigger an inventory quantity lookup.

Next, scan or enter the vendor number. The **Vendor** button can be clicked to show all vendors that have outstanding purchase orders for the part.

Then enter or scan the purchase order number. The **PO#** button can be clicked to show a FIFO list of all open purchase orders for the vendor and part combination.

If the receiving area is bin stocking controlled, the destination bin location is then scanned or selected. The **TO Bin** button can be used to conveniently and quickly list bins that exist in the system. The location tied to the bin automatically displays on the screen.

Now enter the quantity to receive. The system calculates and displays the total quantity that will exist when the receipt is processed. In the above example, the system adds the quantity being received (516.50) and displays a new proposed quantity of 571.62.

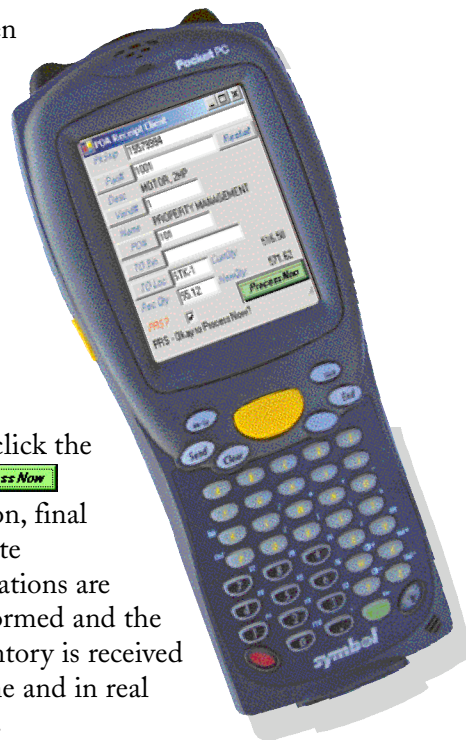
If a problem exists with the PO, the PRS (Problem Receipt Shelf) checkbox will be automatically

checked and highlighted in red, which will trigger the receipt to go on hold, suspending the inventory update for manual review. Note that this PRS hold feature can manually be triggered anytime by clicking the box.

When

you click the **Process Now** button, final update validations are performed and the inventory is received online and in real time.

Although custom tailoring options are available, this process supports all baseline inventory type receipt transactions. This means that regardless of the system features that you use, you can start scanning today without any custom changes!



Microsoft is either a registered trademark or trademark of Microsoft Corporation in the United States and/or other countries. DataFlo, ManFact & Avanté and Epicor are products, copyrights and trademarks of Epicor Software Corporation. UniVerse & UniData are products, copyrights and trademarks of IBM Software.

**928.443.9990**

Fax: 928.443.9991 • www.qss.net • e-mail: qssinfo@qss.net  
1515 North Happy Valley Road, Prescott, AZ 86305



**Quality Software  
Solutions, Inc.**